

Quick Start Guide

Radarcape

Art. 66006

Art. 66066

Art. 66077



**jetvision**



Box Contains (Art. 66006):

- Radarcape
- Wall plug power supply
- 5 m network cable
- GPS antenna (cable length 5 m)
- Quick Start Guide



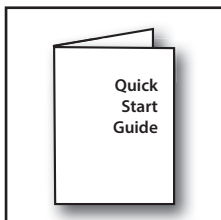
Optional Accessory (Art. 66066):

- „A3 ADS-B“ Antenna
- Antenna cable (cable length 10 m)
- Antenna mount



Optional Accessory (Art. 66077):

- „Active Diapason“ Antenna
- Antenna cable (cable length 20 m)
- Antenna mount
- Bias Tee
- USB power supply cable



Requirements:

- AC power supply 110 V or 230 V
- Internet router providing DHCP and DNS

Visit our Wiki for further information:

http://wiki.modesbeast.com/Radarcape:Installation_Guide

Connections

1. Connect the Mode-S antenna with the antenna cable to the Radarcape, place the antenna as free and as high as possible. **Make sure that the antenna has a conductive connection to ground to avoid damage of Radarcape or Internet router!**
2. Connect the GPS antenna to the Radarcape. Place the GPS antenna to a location with at least half of sky view, e.g. a window sill.
3. Connect the network cable to your Internet router and the Radarcape.
4. Connect the power supply to the Radarcape and your power outlet.

To receive aircraft, you need:

- Antenna (1090 MHz bandwidth)
- Antenna cable

Visit our web-shop:
www.jetvision.de



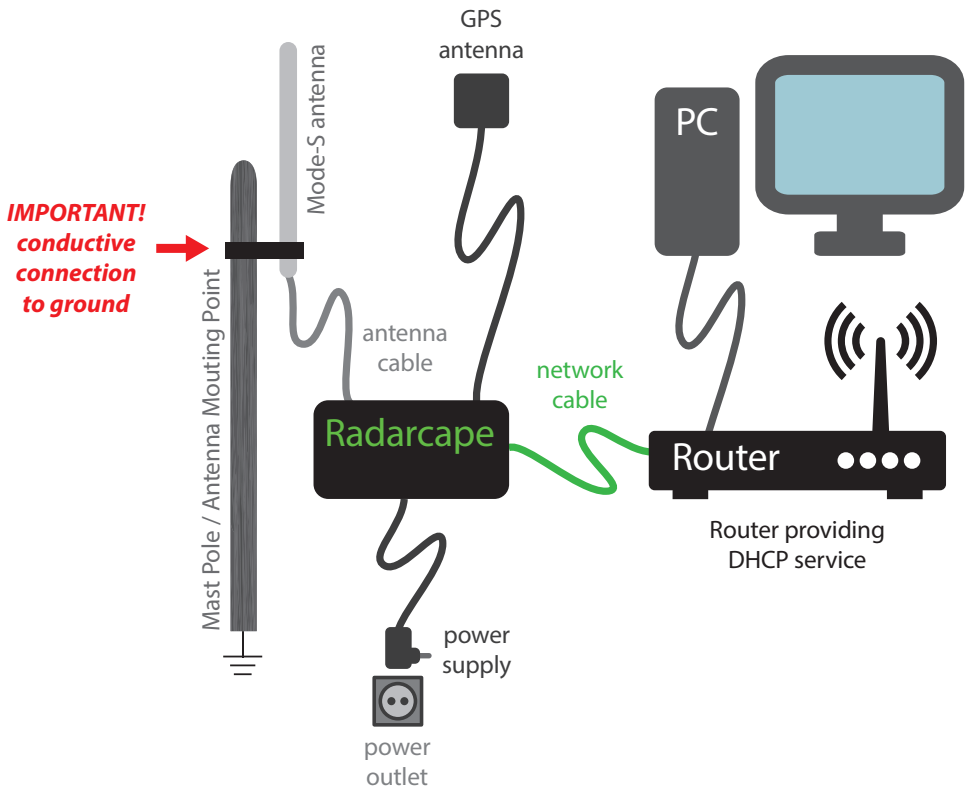
Hardware Installation

Caution:

Static electricity around the antenna can damage your Radarcape or Internet router if there is no ground connection!

Do **NOT** mount the antenna on isolated ground, e.g. wooden stick or plastic or without any connection to ground!

THE ANTENNA MUST BE GROUNDED!



LED Description

Power LED

The power LED is green when power is applied to the device.

Mode-S LED

The Mode-S LED is flashing on each data frame that has been received from aircraft.

If no frames are received (e.g. no antenna connected), it flashes once per second in order to indicate working state.

GPS LED

The GPS LED is flashing green once each second exactly when the second changes.



Startup

1. Wait a few minutes to make sure the network is connected.
2. Open an Internet browser on your PC.

We recommend to use always the latest version of one of the following Internet browsers:

- Internet Explorer
- Firefox
- Chrome
- Safari

3. Enter <http://radarcape> to open the **Radarcape user interface**.

In rare cases, <http://radarcape.local> must be used as some router models use a non-standard configuration.

- Go to **Configuration > Software Maintenance** to **check** the flight routes database, basestation database and Open Glider Net database auto update functions.

The screenshot displays the Jetvision Radarcape software interface. The top navigation bar includes 'Aircraft Data', 'Status', 'Settings', and 'About'. The 'Settings' menu is open, showing options like 'General', 'Jetvision MLAT', 'Feeder Settings', 'External Sources Settings', 'Streaming Data Output', 'Save & Restore Configuration', '3D Network', 'Software Maintenance' (highlighted with a red box), 'Change Password', and 'Reboot'.

The 'Aircraft List' table shows columns for Registration, Mode-S, Flight, Origin, Destination, Altitude, Ground Altitude, Type, Category, Operator, Country, Source, Squawk, Latitude, Longitude, Distance, Signal Level, Last Signal, and Trust. The table lists various aircraft, including 2S-GAZ, 2S-TM, CN-70W, TS-OKR, TS-OKD, AT-84C, AT-84D, AT-84E, AT-84F, AT-84G, AT-84H, AT-84I, AT-84J, AT-84K, AT-84L, AT-84M, AT-84N, AT-84O, AT-84P, AT-84Q, AT-84R, AT-84S, AT-84T, AT-84U, AT-84V, AT-84W, AT-84X, AT-84Y, AT-84Z, AT-85A, AT-85B, AT-85C, AT-85D, AT-85E, AT-85F, AT-85G, AT-85H, AT-85I, AT-85J, AT-85K, AT-85L, AT-85M, AT-85N, AT-85O, AT-85P, AT-85Q, AT-85R, AT-85S, AT-85T, AT-85U, AT-85V, AT-85W, AT-85X, AT-85Y, AT-85Z, AT-86A, AT-86B, AT-86C, AT-86D, AT-86E, AT-86F, AT-86G, AT-86H, AT-86I, AT-86J, AT-86K, AT-86L, AT-86M, AT-86N, AT-86O, AT-86P, AT-86Q, AT-86R, AT-86S, AT-86T, AT-86U, AT-86V, AT-86W, AT-86X, AT-86Y, AT-86Z, AT-87A, AT-87B, AT-87C, AT-87D, AT-87E, AT-87F, AT-87G, AT-87H, AT-87I, AT-87J, AT-87K, AT-87L, AT-87M, AT-87N, AT-87O, AT-87P, AT-87Q, AT-87R, AT-87S, AT-87T, AT-87U, AT-87V, AT-87W, AT-87X, AT-87Y, AT-87Z, AT-88A, AT-88B, AT-88C, AT-88D, AT-88E, AT-88F, AT-88G, AT-88H, AT-88I, AT-88J, AT-88K, AT-88L, AT-88M, AT-88N, AT-88O, AT-88P, AT-88Q, AT-88R, AT-88S, AT-88T, AT-88U, AT-88V, AT-88W, AT-88X, AT-88Y, AT-88Z, AT-89A, AT-89B, AT-89C, AT-89D, AT-89E, AT-89F, AT-89G, AT-89H, AT-89I, AT-89J, AT-89K, AT-89L, AT-89M, AT-89N, AT-89O, AT-89P, AT-89Q, AT-89R, AT-89S, AT-89T, AT-89U, AT-89V, AT-89W, AT-89X, AT-89Y, AT-89Z, AT-90A, AT-90B, AT-90C, AT-90D, AT-90E, AT-90F, AT-90G, AT-90H, AT-90I, AT-90J, AT-90K, AT-90L, AT-90M, AT-90N, AT-90O, AT-90P, AT-90Q, AT-90R, AT-90S, AT-90T, AT-90U, AT-90V, AT-90W, AT-90X, AT-90Y, AT-90Z, AT-91A, AT-91B, AT-91C, AT-91D, AT-91E, AT-91F, AT-91G, AT-91H, AT-91I, AT-91J, AT-91K, AT-91L, AT-91M, AT-91N, AT-91O, AT-91P, AT-91Q, AT-91R, AT-91S, AT-91T, AT-91U, AT-91V, AT-91W, AT-91X, AT-91Y, AT-91Z, AT-92A, AT-92B, AT-92C, AT-92D, AT-92E, AT-92F, AT-92G, AT-92H, AT-92I, AT-92J, AT-92K, AT-92L, AT-92M, AT-92N, AT-92O, AT-92P, AT-92Q, AT-92R, AT-92S, AT-92T, AT-92U, AT-92V, AT-92W, AT-92X, AT-92Y, AT-92Z, AT-93A, AT-93B, AT-93C, AT-93D, AT-93E, AT-93F, AT-93G, AT-93H, AT-93I, AT-93J, AT-93K, AT-93L, AT-93M, AT-93N, AT-93O, AT-93P, AT-93Q, AT-93R, AT-93S, AT-93T, AT-93U, AT-93V, AT-93W, AT-93X, AT-93Y, AT-93Z, AT-94A, AT-94B, AT-94C, AT-94D, AT-94E, AT-94F, AT-94G, AT-94H, AT-94I, AT-94J, AT-94K, AT-94L, AT-94M, AT-94N, AT-94O, AT-94P, AT-94Q, AT-94R, AT-94S, AT-94T, AT-94U, AT-94V, AT-94W, AT-94X, AT-94Y, AT-94Z, AT-95A, AT-95B, AT-95C, AT-95D, AT-95E, AT-95F, AT-95G, AT-95H, AT-95I, AT-95J, AT-95K, AT-95L, AT-95M, AT-95N, AT-95O, AT-95P, AT-95Q, AT-95R, AT-95S, AT-95T, AT-95U, AT-95V, AT-95W, AT-95X, AT-95Y, AT-95Z, AT-96A, AT-96B, AT-96C, AT-96D, AT-96E, AT-96F, AT-96G, AT-96H, AT-96I, AT-96J, AT-96K, AT-96L, AT-96M, AT-96N, AT-96O, AT-96P, AT-96Q, AT-96R, AT-96S, AT-96T, AT-96U, AT-96V, AT-96W, AT-96X, AT-96Y, AT-96Z, AT-97A, AT-97B, AT-97C, AT-97D, AT-97E, AT-97F, AT-97G, AT-97H, AT-97I, AT-97J, AT-97K, AT-97L, AT-97M, AT-97N, AT-97O, AT-97P, AT-97Q, AT-97R, AT-97S, AT-97T, AT-97U, AT-97V, AT-97W, AT-97X, AT-97Y, AT-97Z, AT-98A, AT-98B, AT-98C, AT-98D, AT-98E, AT-98F, AT-98G, AT-98H, AT-98I, AT-98J, AT-98K, AT-98L, AT-98M, AT-98N, AT-98O, AT-98P, AT-98Q, AT-98R, AT-98S, AT-98T, AT-98U, AT-98V, AT-98W, AT-98X, AT-98Y, AT-98Z, AT-99A, AT-99B, AT-99C, AT-99D, AT-99E, AT-99F, AT-99G, AT-99H, AT-99I, AT-99J, AT-99K, AT-99L, AT-99M, AT-99N, AT-99O, AT-99P, AT-99Q, AT-99R, AT-99S, AT-99T, AT-99U, AT-99V, AT-99W, AT-99X, AT-99Y, AT-99Z, AT-100A, AT-100B, AT-100C, AT-100D, AT-100E, AT-100F, AT-100G, AT-100H, AT-100I, AT-100J, AT-100K, AT-100L, AT-100M, AT-100N, AT-100O, AT-100P, AT-100Q, AT-100R, AT-100S, AT-100T, AT-100U, AT-100V, AT-100W, AT-100X, AT-100Y, AT-100Z.

The 'Software Maintenance' section shows the 'Configure Database Update' settings. The 'Flight Route Database Automatic Update (every 3H)' is set to 'Enabled'. The 'Flight Route Type' is set to 'ICAO 4 Letter Code'. The 'Aircraft Type Database Automatic Update (every 3H)' is set to 'Enabled'. The 'Aircraft Type Database Source (basestation.sq)' is set to 'radarcape.com (Recommended)'. The 'Open Glider Net Database Automatic Update (every 3H)' is set to 'Enabled'. The 'Check Settings' button is visible at the bottom.

The basestation database contains the **registration** and the **type** of an aircraft.

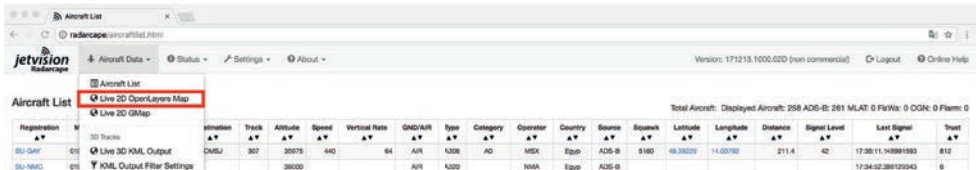
The flightroutes database contains the **origin** and the **destination** of a flight.

It is necessary to update these databases because otherwise this information will not be shown on the **Aircraft Data** pages.

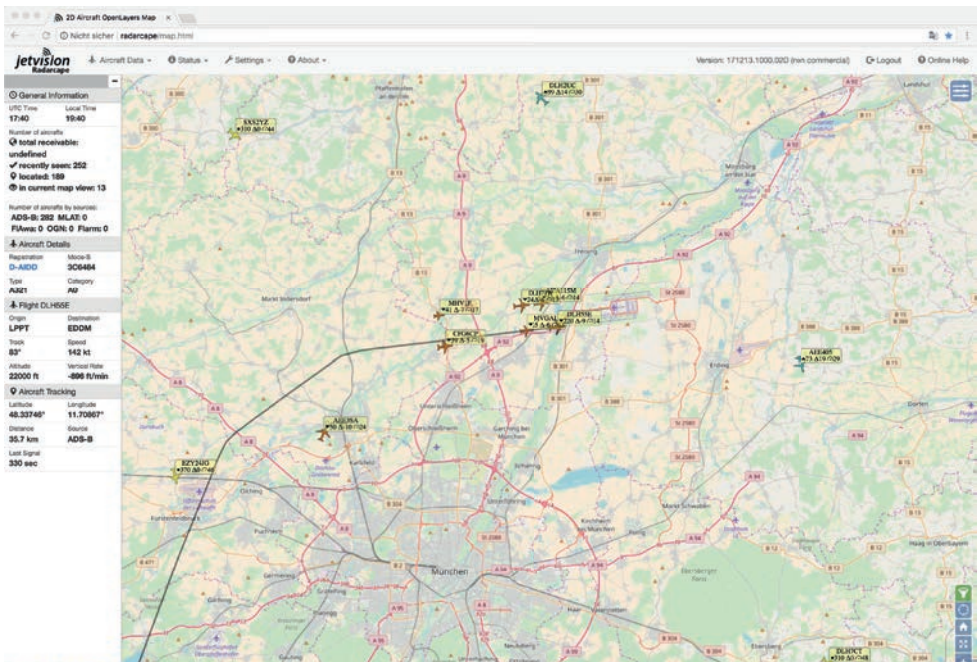
As we try to improve the Radarcape software continuously, the **latest software version** can be found here:

http://wiki.modesbeast.com/Radarcape:Installation_Guide

5. Go to **Aircraft Data > Live 2D Output** to see the received aircraft on a 2D map.



6. Enjoy your Radarcape!



Visit our **Wiki** for more details about the Radarcape system software:
<http://wiki.modesbeast.com/Radarcape:Contents>

Distribution

Günter Köllner Embedded Development GmbH
85256 Vierkirchen, Germany