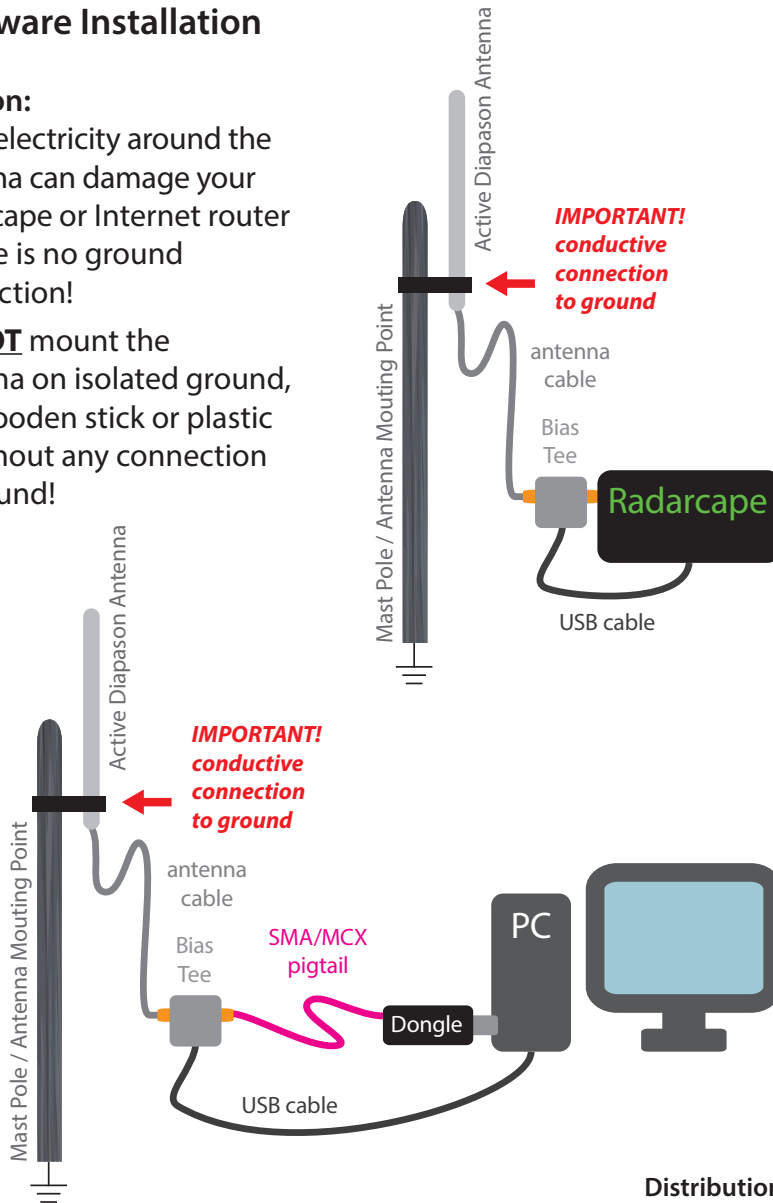


Hardware Installation

Caution:

Static electricity around the antenna can damage your Radarcape or Internet router if there is no ground connection!

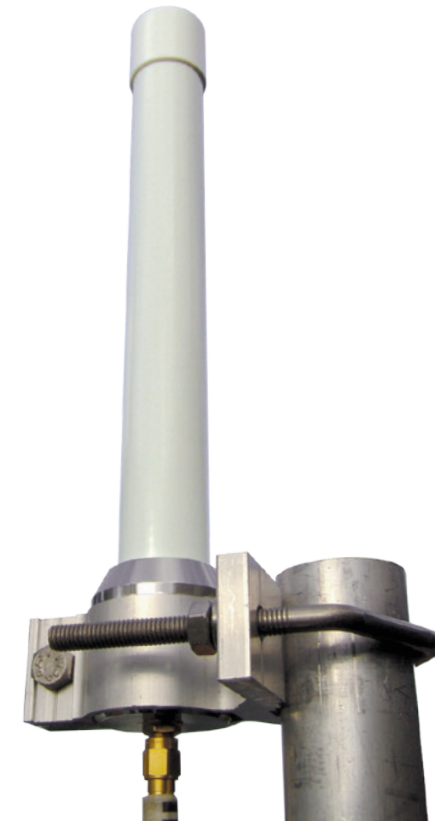
Do **NOT** mount the antenna on isolated ground, e.g. wooden stick or plastic or without any connection to ground!



Distribution

Günter Köllner Embedded Development GmbH
85256 Vierkirchen, Germany

Quick Start Guide „Active Diapason“ Antenna



Art. 66077
Art. 68140
Art. 68200
Art. 68240
Art. 69140
Art. 69200

jetvision.de



Box Contains (Art. 68200, Art. 69200):

- „Active Diapason“ Antenna
- Antenna mount
- Bias Tee
- USB power supply cable
- Quick Start Guide



Additional Bundle Parts

(Art. 68140, Art. 69140):

- Antenna cable (cable length 20 m)



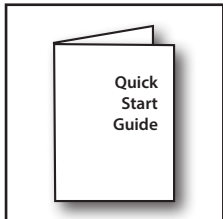
(Art. 68240):

- Antenna cable (cable length 20 m)
- ADS-B USB Dongle
- SMA/MCX-pigtails
- Small indoor antenna



(Art. 66077):

- Radarcape
- Antenna cable (cable length 20 m)
- Wall plug power supply
- 5 m network cable
- GPS antenna (cable length 5 m)



Connections

1. Connect the „Active Diapason“ Antenna with the antenna cable to the Bias Tee, place the antenna as free and as high as possible.
Make sure that the antenna has a conductive connection to ground to avoid damage of Radarcape or Internet router!
2. Connect the Bias Tee to the receiver (e.g. Radarcape/ Dongle). To connect the USB Dongle use the SMA/MCX-pigtails.
3. Connect the USB power supply cable to the Bias Tee and a free USB port e.g. the front slot of the Radarcape.
4. Connect the receiver as specified in the receiver's manual.

